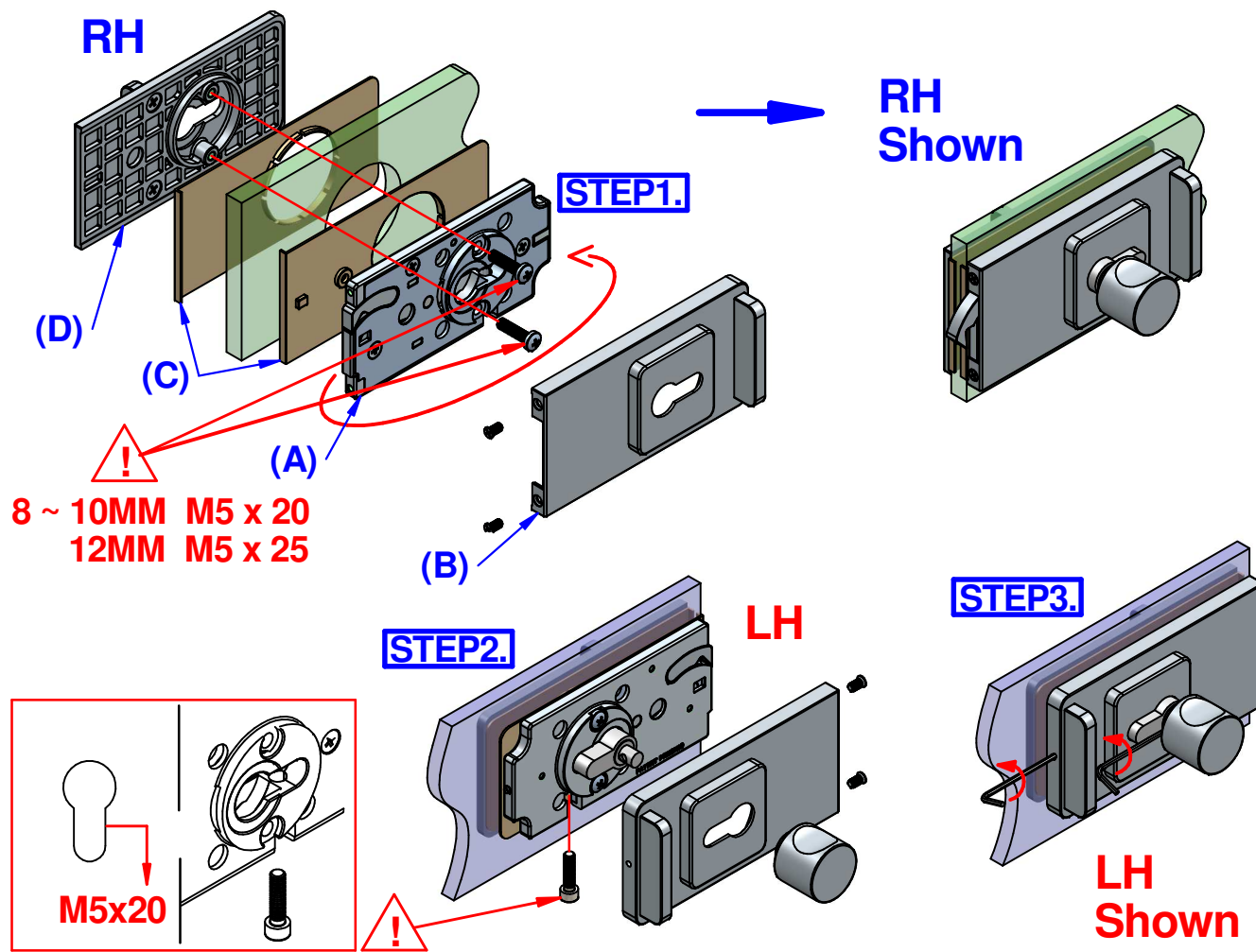


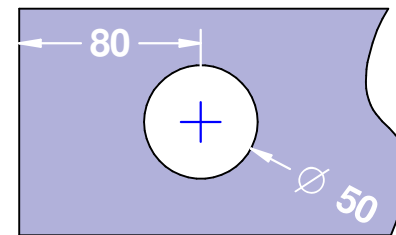
# Sliding Glass Door Locks Installation

\* How to Change from Open-to-Right to Open-to-Left\*

**! Tempered Glass Only**



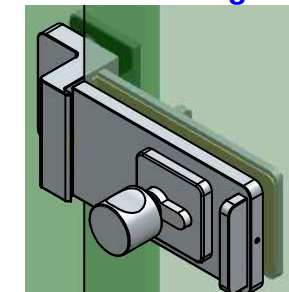
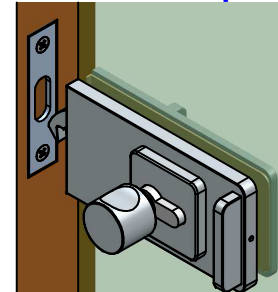
\* Glass Cut Out \*



\* Optional Strike Plate / Box \*

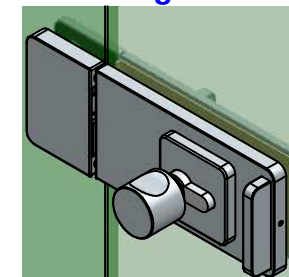
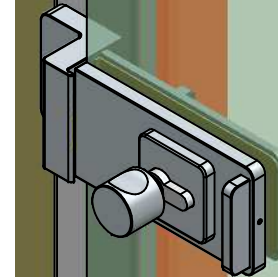
Glass to strikeplate

Glass to fixed glass



Glass to wall / frame

Glass to glass



- STEP 1. Reversing (A) lock body 180 degree horizontally and fixing the back to the glass door .
- STEP 2. Turning (B)(D) the lock covers and (C) gaskets 180 degree clockwise to open-to-left and assemble the cylinder without knob yet by M5x20 screw.
- STEP 3. Assemble the lock cover and cylinder knob with set screw.

\* 3 years warranty \* 20 years patent in many countries

